



10 Carlson Court

Toronto, ON

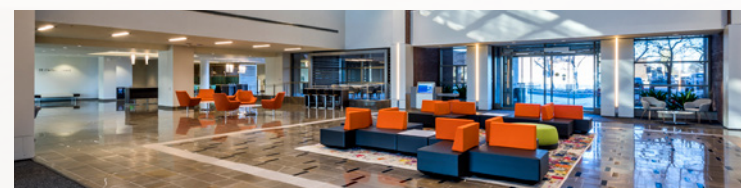
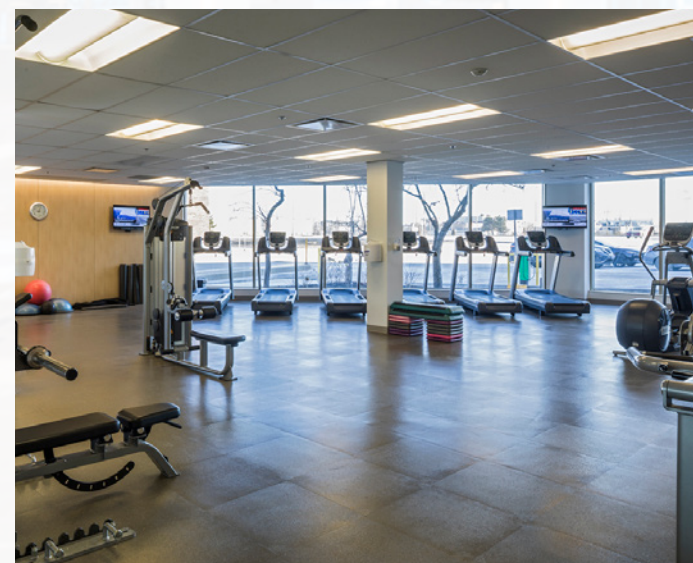
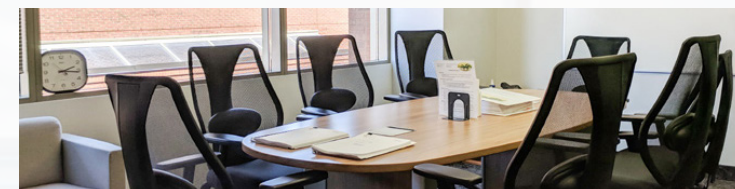
Kay Locke*

Vice President
416 798 6268
kay.locke@cbre.com

*Sales Representative

Property Specifications

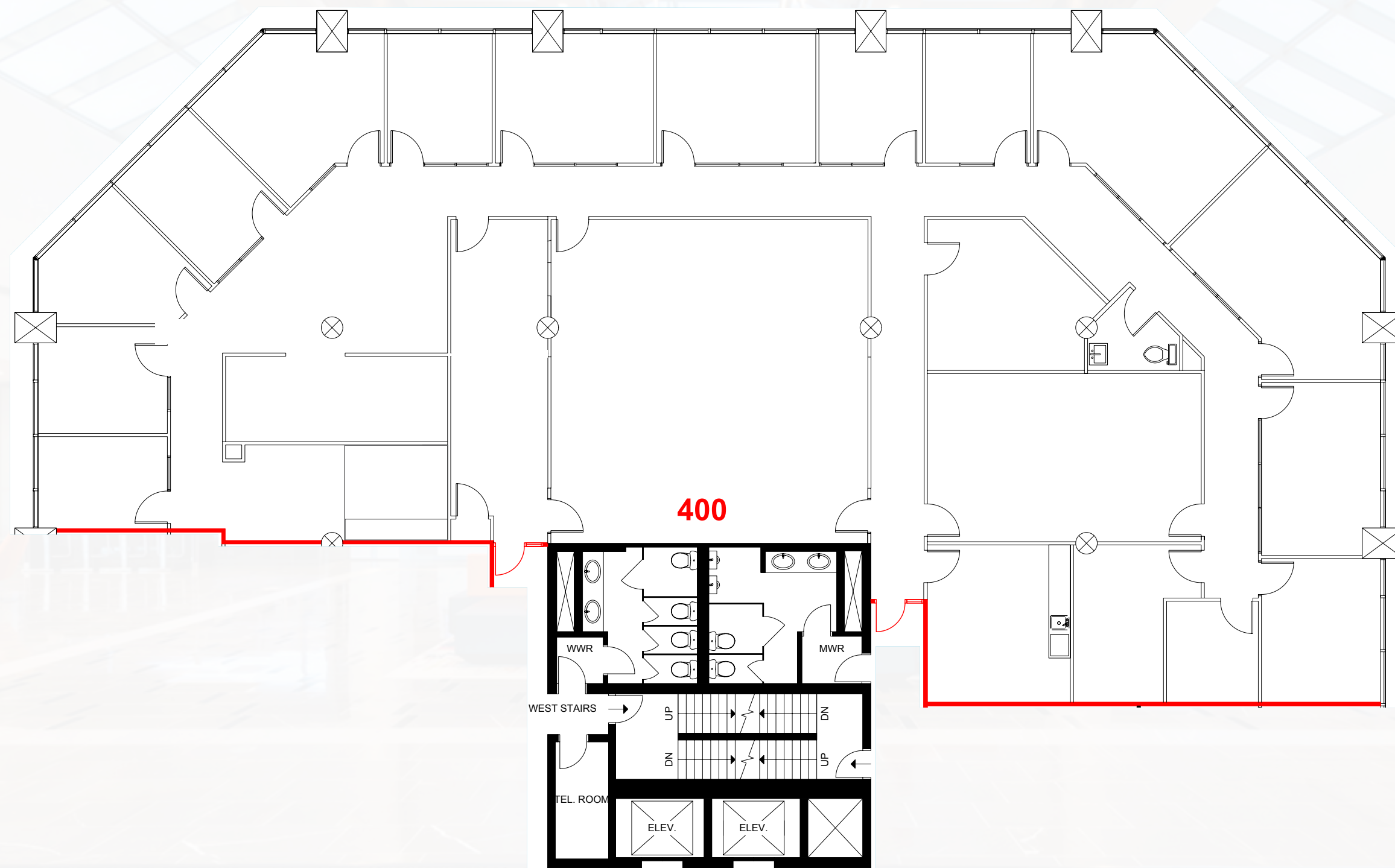
	Size	7,053 sq. ft.
	Net Rent	Negotiable
	Additional Rent (2024 Estimate)	\$20.35 PSF
	Sublease Term	July 30, 2026
	Availability	60 Days Notice
	Parking	4:1,000 sq. ft.




Suite 400 at 10 Carlson Court is a move-in-ready sublease opportunity with remaining furniture available and a motivated sublandlord. This offering comes equipped with excellent access to natural light and on-site amenities, including: Wi-Fi Tenant lounge and lobby space, outdoor seating area, fitness centre, conference centre, and on-site cafe. Strategically located in the Airport node, 10 Carlson Court provides immediate access to 400-series highways, QEW, and is minutes to Toronto Pearson International Airport.


Floor Plan


Suite 400




 ETOBICOKE NORTH GO STATION


 MiWay Bus Route 11 - Westwood

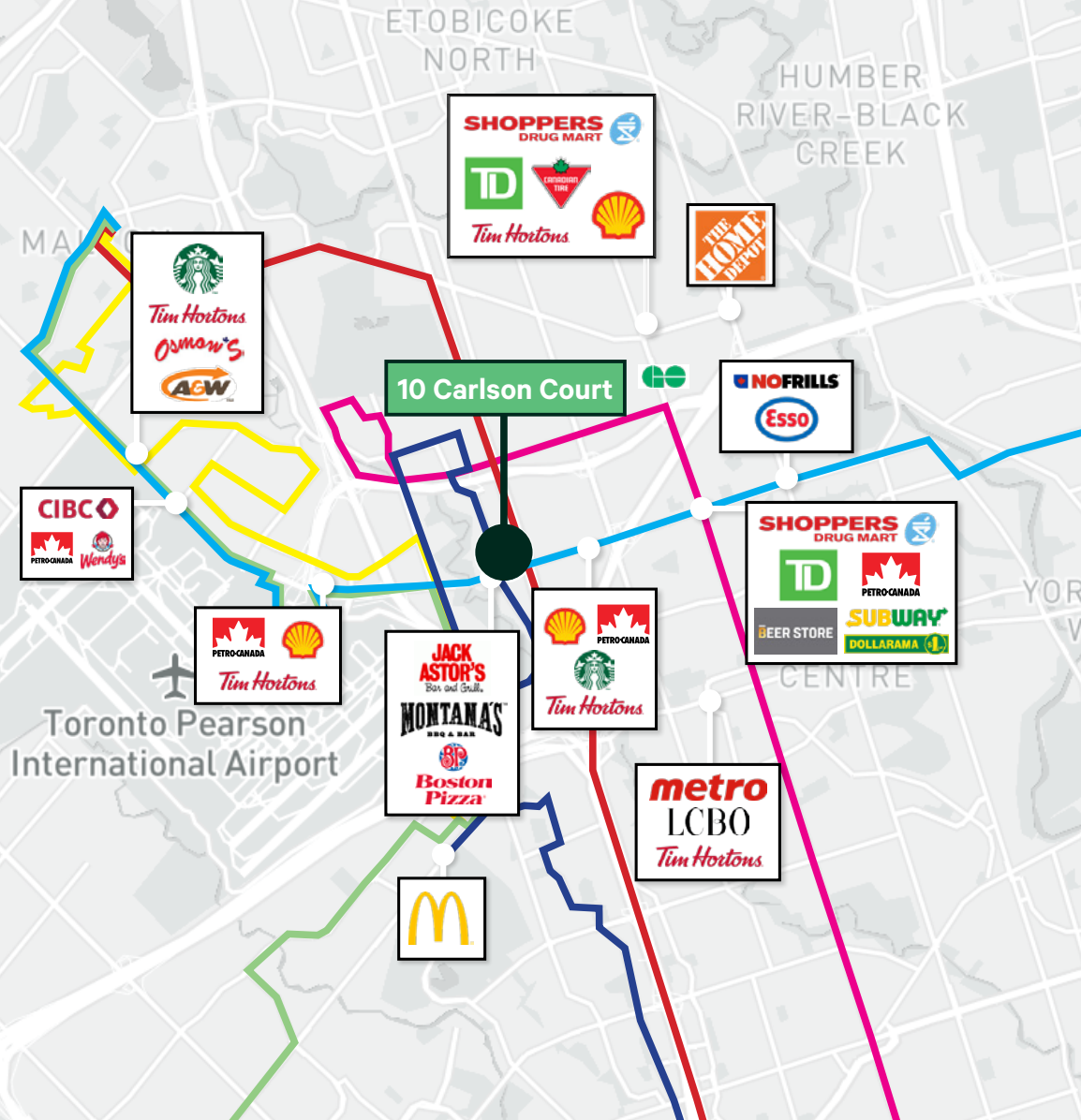
 MiWay Bus Route 24 - Northwest

 MiWay Bus Route 7 - Airport

 TTC Bus Route 112 - West Mall

 TTC Bus Route 45 - Kipling

 TTC Bus Route 52 - Lawrence West



For More Information:

Kay Locke*

Vice President

416 798 6268

kay.locke@cbre.com

*Sales Representative

This disclaimer shall apply to CBRE Limited, Real Estate Brokerage, and to all other divisions of the Corporation ("CBRE"). The information set out herein, including, without limitation, any projections, images, opinions, assumptions and estimates obtained from third parties (the "Information") has not been verified by CBRE, and CBRE does not represent, warrant or guarantee the accuracy, correctness and completeness of the Information. CBRE does not accept or assume any responsibility or liability, direct or consequential, for the Information or the recipient's reliance upon the Information. The recipient of the Information should take such steps as the recipient may deem necessary to verify the Information prior to placing any reliance upon the Information. The Information may change and any property described in the Information may be withdrawn from the market at any time without notice or obligation to the recipient from CBRE. CBRE and the CBRE logo are the service marks of CBRE Limited and/or its affiliated or related companies in other countries. All other marks displayed on this document are the property of their respective owners. All Rights Reserved. Mapping Sources: Canadian Mapping Services canadamapping@cbre.com; DMTI Spatial, Environics Analytics, Microsoft Bing, Google Earth