

For Lease

901

KING STREET W

KING WEST RETAIL FOR LEASE



Property Details

901 King Street West

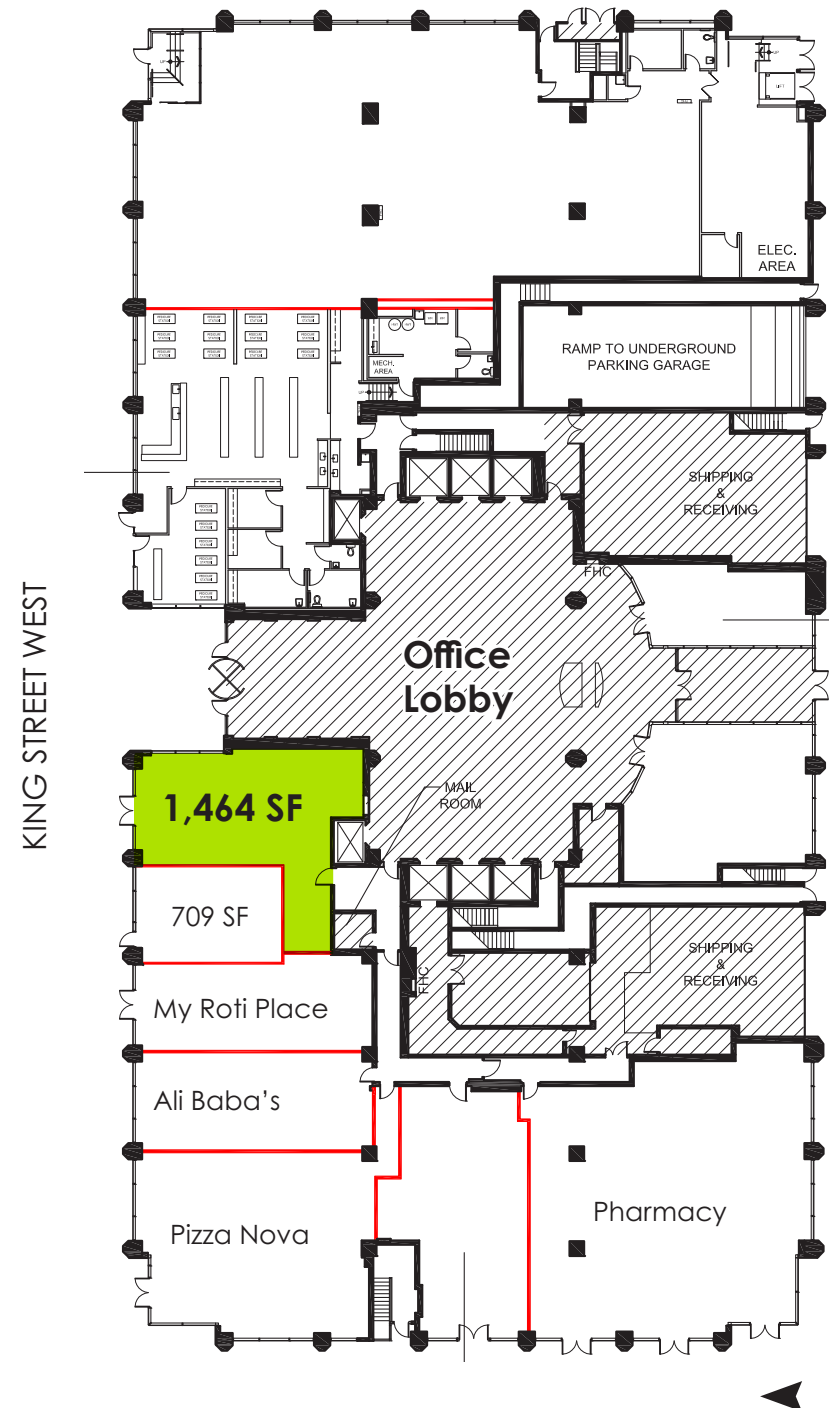
Size: 1,464 sq. ft.

Net Rent: \$40.00 per sq. ft.

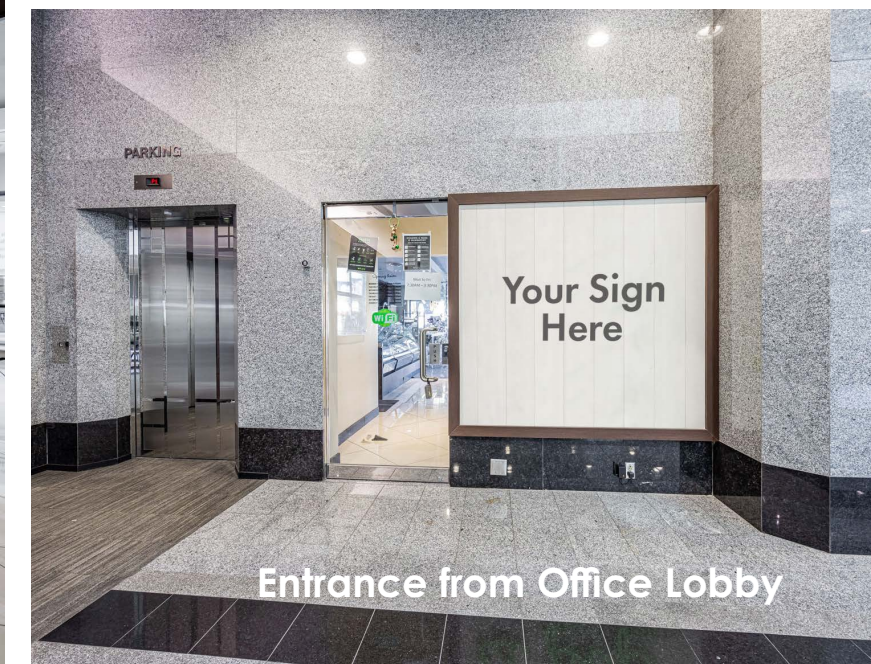
TMI: \$21.59 per sq. ft. + janitorial & hydro

Available: Immediately

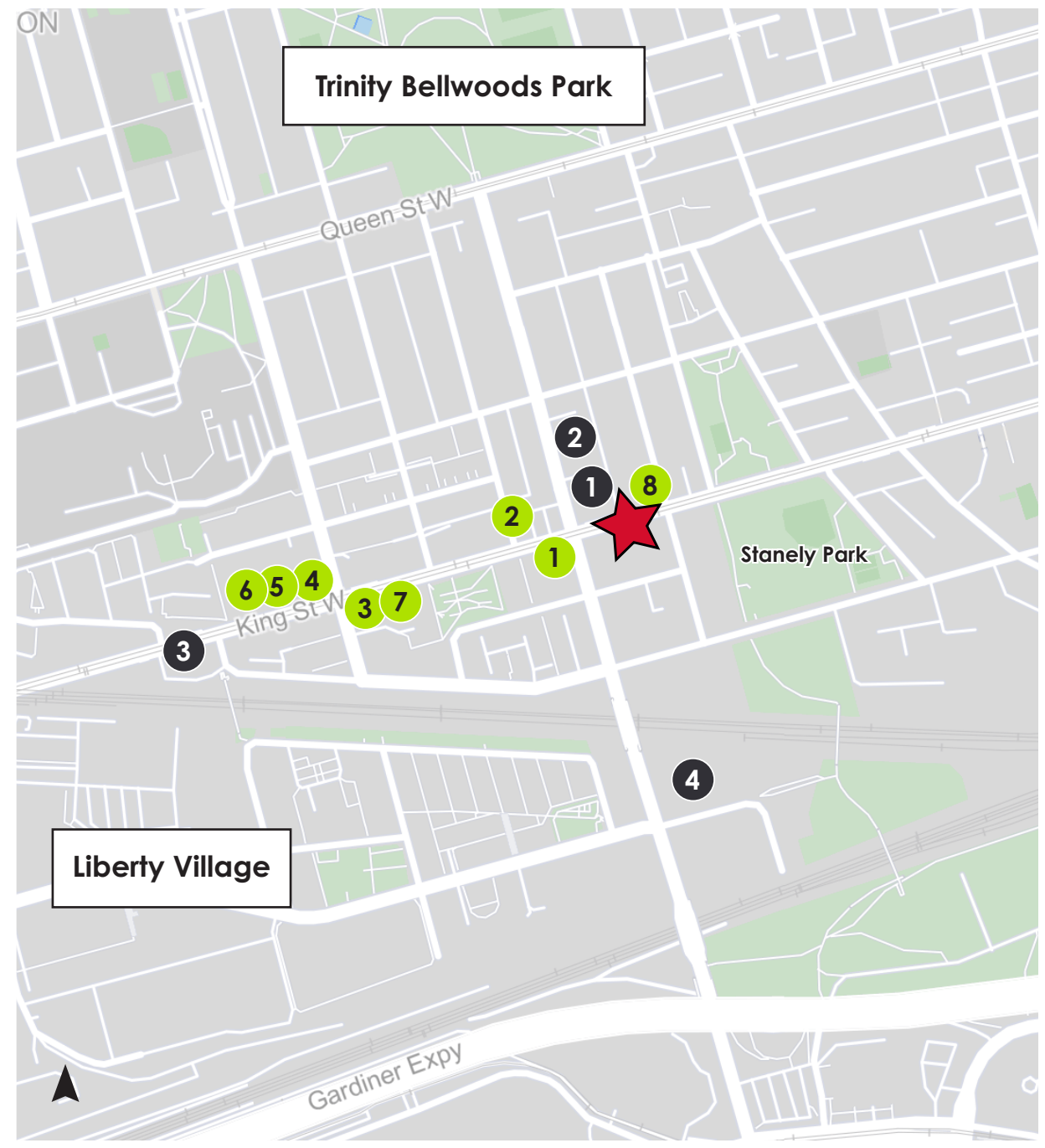
- Right-sized, fully-fixture restaurant spaces with patio potential
- Potential to combine with neighbouring unit for up to 2,173 sq. ft.
- Streetfront access as well as access via the office lobby
- At the south-east corner of King Street West and Strachan Avenue, in close proximity to Liberty Village, Stanley Park, and Trinity Bellwoods
- Located on the ground level of a 2,000+ employee office building
- Directly on the 504 King Streetcar line



CBRE



Entrance from Office Lobby



Area Developments

- 1 950 King West**
Units: 192
Status: Pre-Construction
- 2 11 Strachan**
Units: 314
Status: Pre-Construction
- 3 1071 King Street West**
Units: 227
Status: Pre-Construction
- 4 45 Strachan**
Units: 443
Status: Construction

Neighbouring Tenants

- 1** King Rustic Kitchen + Bar
- 2** Circle K
- 3** Starbucks
- 4** Independent City Market
- 5** Tim Hortons
- 6** Sleep Country
- 7** Wine Rack
- 8** Benjamin Moore

Advisory Team

Arlin Markowitz*
Executive Vice President
416 815 2374
arlin.markowitz@cbre.com

Alex Edmison*
Senior Vice President
416 874 7266
alex.edmison@cbre.com

Jackson Turner**
Senior Vice President
416 815 2394
jackson.turner@cbre.com

Teddy Taggart*
Vice President
416 847 3254
teddy.taggart@cbre.com

Emily Everett
Sales Representative
647 943 4185
emily.everett@cbre.com

*Sales Representative

**Broker

The logo for CBRE, consisting of the letters "CBRE" in a bold, black, sans-serif font.

This disclaimer shall apply to CBRE Limited, Real Estate Brokerage, and to all other divisions of the Corporation; to include all employees and independent contractors ("CBRE"). The information set out herein, including, without limitation, any projections, images, opinions, assumptions and estimates obtained from third parties (the "Information") has not been verified by CBRE, and CBRE does not represent, warrant or guarantee the accuracy, correctness and completeness of the Information. CBRE does not accept or assume any responsibility or liability, direct or consequential, for the Information or the recipient's reliance upon the Information. The recipient of the Information should take such steps as the recipient may deem necessary to verify the Information prior to placing any reliance upon the Information. The Information may change and any property described in the Information may be withdrawn from the market at any time without notice or obligation to the recipient from CBRE. CBRE and the CBRE logo are the service marks of CBRE Limited and/or its affiliated or related companies in other countries. All other marks displayed on this document are the property of their respective owners. All Rights Reserved.