



CENTENNIAL CENTRE

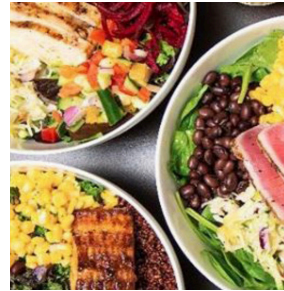
5395-5409 EGLINTON AVE W
ETOBICOKE



PROPERTY FEATURES

- Move-in office space for lease from 1,000 sq. ft. and up!
- Great transit location: Renforth Station (MiWay, GO Transit, TTC access)
- Breathable office space with operable windows
- Outdoor space including private balconies and picnic areas
- Free on-site surface parking
- Fibre optic internet capability - Rogers and Bell

LEASING OPPORTUNITIES



LISTED BY



OWNED & MANAGED BY

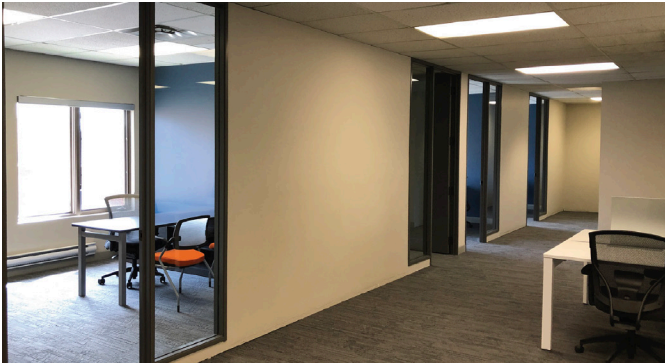


AMENITIES

Collaborate with colleagues in outdoor surroundings with on-site terraces and picnic tables, take a stroll through Centennial Park or meet over a beer on the porch at the London Gate Pub.



TENANT LOUNGE & CONFERENCE CENTRE



BOUTIQUE OFFICE SPACE



TENANT FITNESS CENTRE



PARK AT YOUR FRONT DOOR



GREAT HIGHWAY & PUBLIC TRANSIT ACCESS



ON-SITE FOOD RETAILERS

For more information, please contact:

Trevor Smith*
Sales Representative
+1 416 620 2830 | trevor.smith@colliers.com

Chris Burans*
Vice President, Sales Representative
416.258.9845 | chris.burans@colliers.com

Ryan McAskile**
Director, Leasing
416.725.2703 | rmcaskile@crp-cpmi.com

