



# 30 eglinton

AVENUE WEST

CONVENIENCE CONNECTED

CROWN

# Property Highlights



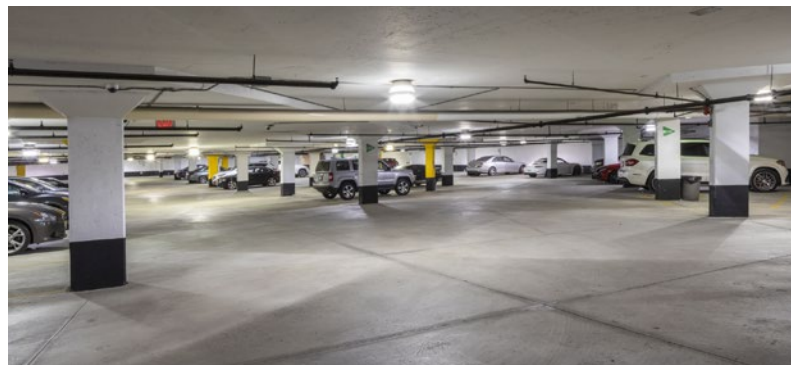
Model Suite Program Underway



Newly Renovated Lobby



On-Site Food Retailers



Surface and Underground Parking Available



WiredScore Certified



Excellent Highway & Public Transit Accessibility



# Make A Great First Impression

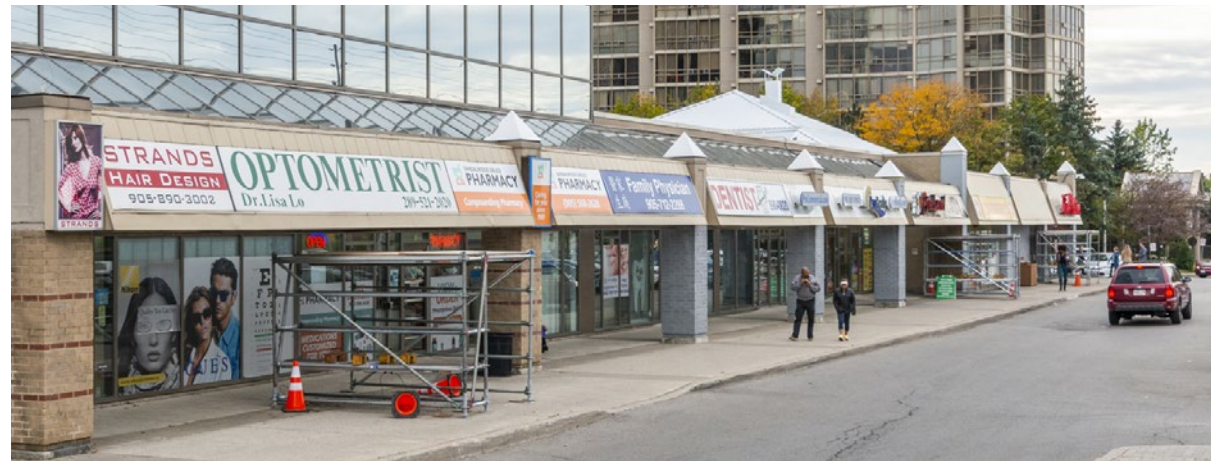
30 Eglinton recently went through a full lobby renovation, giving the building a sophisticated and welcoming look and feel upon entering.



# Convenience Connected


## ACCESS TO CONVENIENT ON-SITE AMENITIES

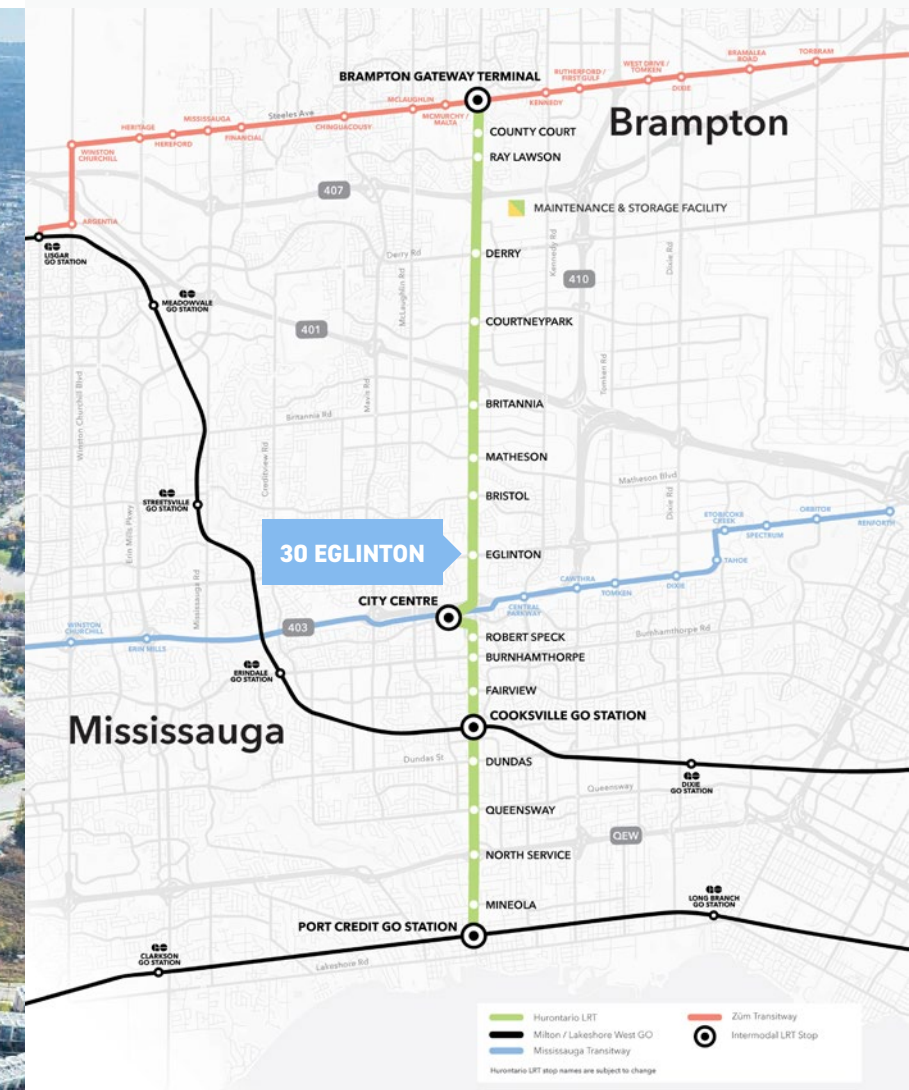
- The Wilcox Gastropub
- Tim Hortons
- Emerald Chinese
- Scotiabank
- CoCo Fresh Tea & Juice
- Mamma's Pizza
- Sandalwood Drugs Compounding Pharmacy








# Access and Amenities



- |                        |  |
|------------------------|--|
| 1. Walmart             | 9. TD Canada Trust   |
| 2. Sportchek           | 10. Swiss Chalet   |
| 3. Whole Foods         | 11. Second Cup   |
| 4. Ciniplex            | 12. Shoppers Drugmart  |
| 5. Pizza Hut           | 13. LCBO   |
| 6. Toys R' Us          | 14. Starbucks  |
| 7. CIBC                | 15. ESSO   |
| 8. Oceans Fresh Market |  Transit Stop |



 Hurontario LRT  
 Milton / Lakeshore West GO  
 Mississauga Transitway  
 Züm Transitory  
 Intermodal LRT Stop  
Hurontario LRT stop names are subject to change

# A Greener Workplace

Crown has an ongoing commitment to sustainable corporate and building operations. With environmental, social and governance (ESG) management an integral part of our strategy, our aim is to reduce our environmental footprint while elevating the way we operate for our clients, stakeholders and the greater community.

We manage and track what we believe to be the most important environmental indicators for our business: energy consumption, water usage, waste generation, and carbon emissions.



**ENERGY USE  
INTENSITY**



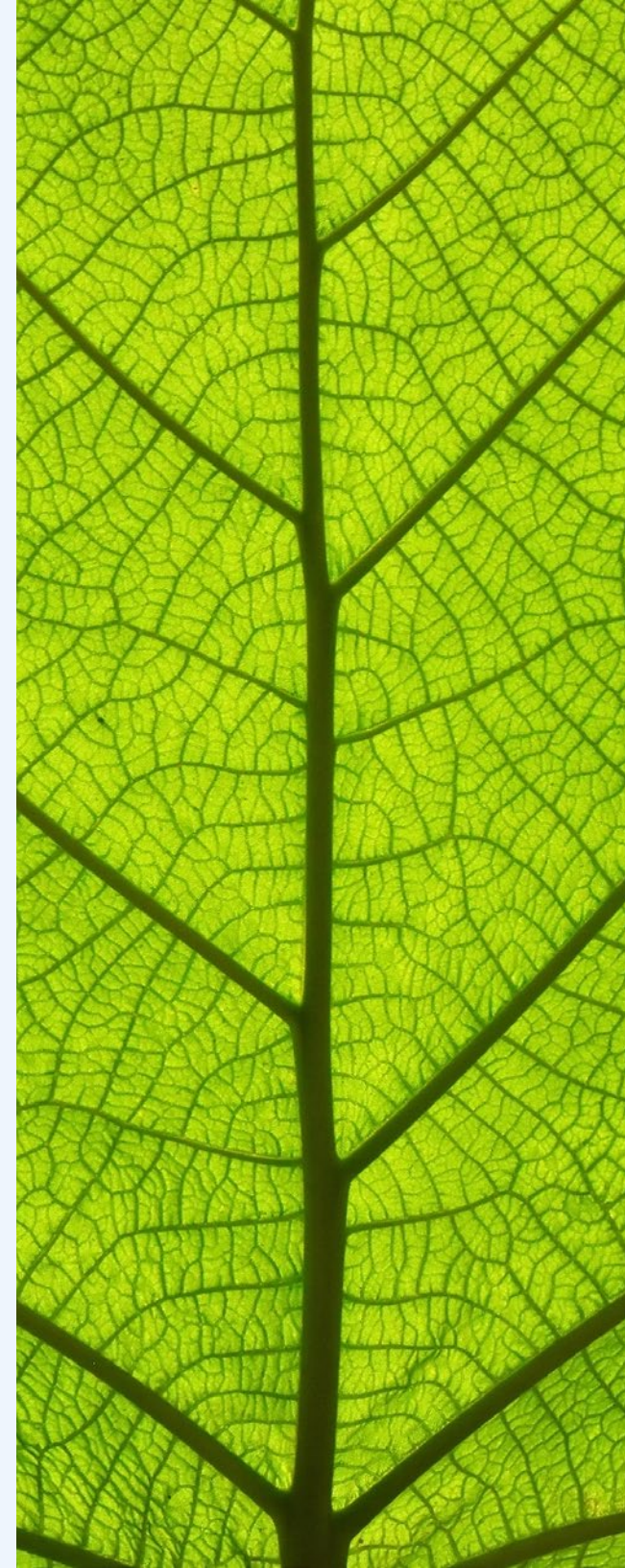
**WATER USE  
INTENSITY**



**GHG  
EMISSIONS**



**CAPTURE RATE FOR  
NON-HAZARDOUS  
WASTE**



## ABOUT CROWN

Founded in 2001, Crown Realty Partners acquires, leases, manages and redevelops commercial real estate assets across Canada. Crown has a well established track record, an experienced team and takes a hands-on approach to provide superior returns for our investors and better workplaces for businesses operating within our portfolio.

The Partners of Crown co-invest alongside the corporations, institutions, pension funds and high net worth individuals that entrust us with their capital, ensuring strong alignment of interests.

# CROWN

For more information about the property or to arrange a tour, please contact:

Ryan McAskile\*  
Director, Leasing  
416-725-2703  
rmcaskile@crp-cpmi.com

[crownrealtypartners.com](https://crownrealtypartners.com) | [@CrownCRP](https://twitter.com/CrownCRP)

