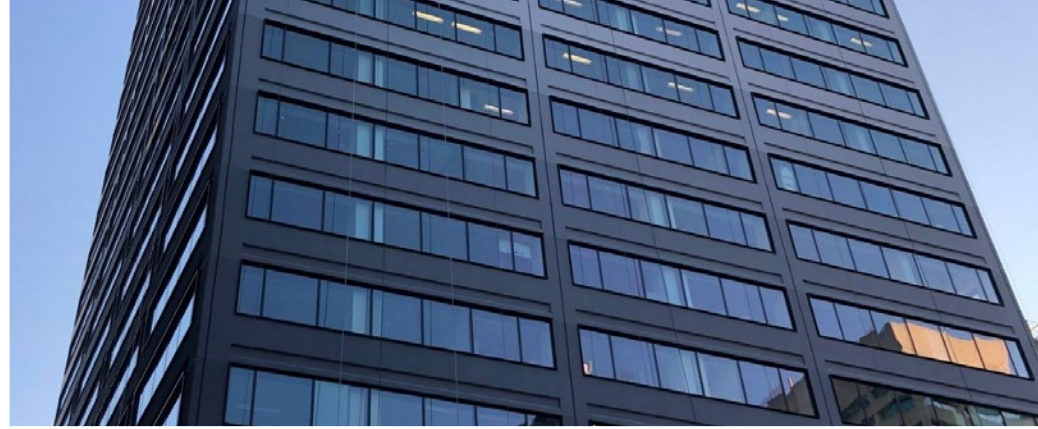




DUNDAS
STREET WEST

CROWN



WINDOW UPGRADES



DOUBLE-PANE



SINGLE-PANE

WE'RE DOING A 180

180 Dundas Street West is a professional office building in the heart of downtown Toronto. Its location at University Avenue and Dundas Street West puts it at the centre of some of Toronto's most coveted business areas - the Financial Core, The Discovery District and the University Corridor. 180 Dundas Street West is just minutes from St. Patrick and Dundas Subway Stations, Yonge/Dundas Square, The Eaton Centre, world class restaurants, entertainment and other amazing amenities.

Within the building itself you will find numerous on-site amenities such as a WorkFit by Crown Fitness Centre and a Conference Centre exclusive for tenant use. Workspaces are bright, flexible and highly efficient while capital improvements to the building, paired with a trusted building manager and ownership, make this building the perfect destination for your business now, and for the future.

NEWLY COMPLETED UPGRADES:

LOBBY

FITNESS CENTRE

CONFERENCE CENTRE

NEW BUILDING FAÇADE

ENERGY SAVING WINDOWS

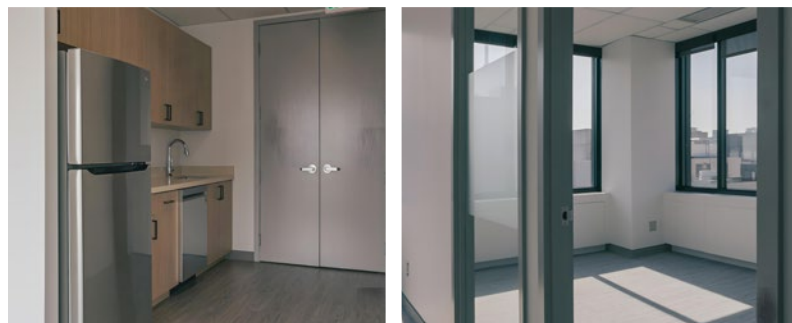
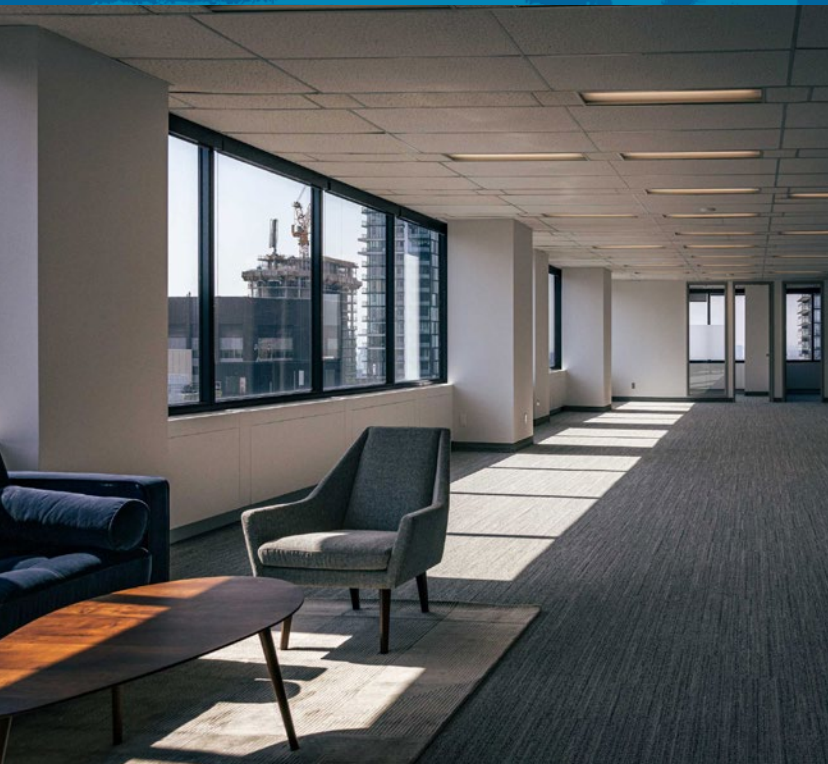
COMMON AREA UPGRADES

WASHROOM UPGRADES



CROWN REALTY PARTNERS

MODEL SUITES OF VARIOUS SIZES UNDERWAY



EFFICIENT FLOOR PLATE

Whether you are looking for a modern and open office design, or more of a traditional layout, it can be built out to meet your precise business needs.



NUMEROUS SPACE OPTIONS

180 Dundas provides a number of space options from 1,992 to 12,000 sq. ft. full floor or multi-floor options for your business, your brand and your culture to flourish



ABUNDANT NATURAL LIGHT

Large windows provide 360 degree views of the city and an abundance of bright, natural light for the office space.

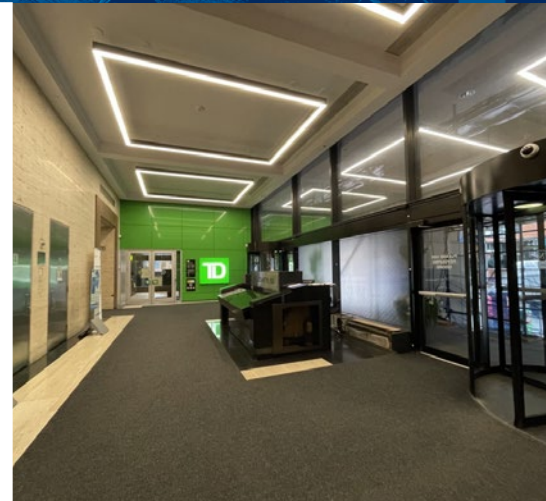


COMMON AREA UPGRADES

Common area upgrades have been made throughout the building, providing a refreshed and professional look and atmosphere for tenants and visitors alike!



UNLIMITED AMENITIES



FITNESS CENTRE

180 Dundas St W features WorkFit by Crown, a fully equipped fitness centre is located right on-site, including change rooms, showers and lockers.



CONFERENCE CENTRE

A well lit, functional on-site tenant conference centre with a Polycom Conferencing Pod, Smart Board and WiFi.



AMAZING AMENITIES

180 Dundas St W's location provides fast access to unlimited amenities. The building also includes convenient amenities such as TD Bank and Java Joe's Coffee.



SECURE STORAGE

Safe and secure storage units available for tenants to rent on site.



AMAZING ACCESS

Located centrally amongst Toronto's Discovery District, the Financial Core and the cosmopolitan Downtown West end, 180 Dundas Street West puts you moments from everything Toronto has to offer. With St. Patrick and Dundas Subway Stations just steps from the building, it makes anywhere, effortless.



TRANSIT SCORE
100%



WALK SCORE
100%



SHOPPING

1. CF EATON CENTRE
2. SHOPPERS DRUG MART
3. GUESS
4. CANADIAN TIRE
5. BEST BUY
6. H&M
7. ADIDAS
8. FUTURE SHOP
9. THE BAY

FOOD

1. DUKE OF CORNWALL
2. CULTURES
3. NOTA BENE
4. THE MERCHANT
5. MOMOFUKU
6. JOEY
7. MERCATTO
8. HY'S STEAKHOUSE
9. THE CHASE
10. BARBARIANS STEAKHOUSE
11. THE QUEEN & BEAVER
12. RED LOBSTER

HOTELS

1. HILTON TORONTO
2. SHANGRI-LA
3. THE ADELAIDE HOTEL
4. METROPOLITAN HOTEL
5. SHERATON HOTEL
6. PANTAGES HOTEL
7. DELTA HOTEL
8. MARIOTT HOTEL
9. EATON CHELSEA HOTEL

CAFES & COFFEE

1. TIM HORTONS
2. STARBUCKS
3. STARBUCKS
4. TIMOTHYS
5. JAVA JOES
6. CAFE PLENTY
7. DARKHORSE
8. SECOND CUP

ARTS & ENTERTAINMENT

1. ART GALLERY OF ONTARIO
2. FOUR SEASONS CENTRE
3. ELGIN THEATRE
4. MASSEY HALL
5. ED MIRVISH THEATRE
6. YONGE & DUNDAS SQUARE

GOVERNMENT & INSTITUTIONS

1. RYERSON UNIVERSITY
2. MARS DISCOVERY CENTRE
3. HOSPITAL FOR SICK CHILDREN
4. MOUNT SINAI HOSPITAL
5. PRINCESS MARGRET HOSPITAL
6. TORONTO GENERAL HOSPITAL
7. CITY HALL
8. OSGOODE HALL
9. OCAD
10. NATHAN PHILLIPS SQUARE





ABOUT CROWN

Founded in 2001, Crown Realty Partners acquires, leases, manages and redevelops commercial real estate assets across Canada. Crown has a well established track record, an experienced team and takes a hands-on approach to provide superior returns for our investors and better workplaces for businesses operating within our portfolio.

The Partners of Crown co-invest alongside the corporations, institutions, pension funds and high net worth individuals that entrust us with their capital, ensuring strong alignment of interests.

For more information, contact:

Stefan Teague**

Partner, Leasing

steague@crp-cpmi.com | 289-724-7420

@CrownCRP | **crownrealtypartners.com**

